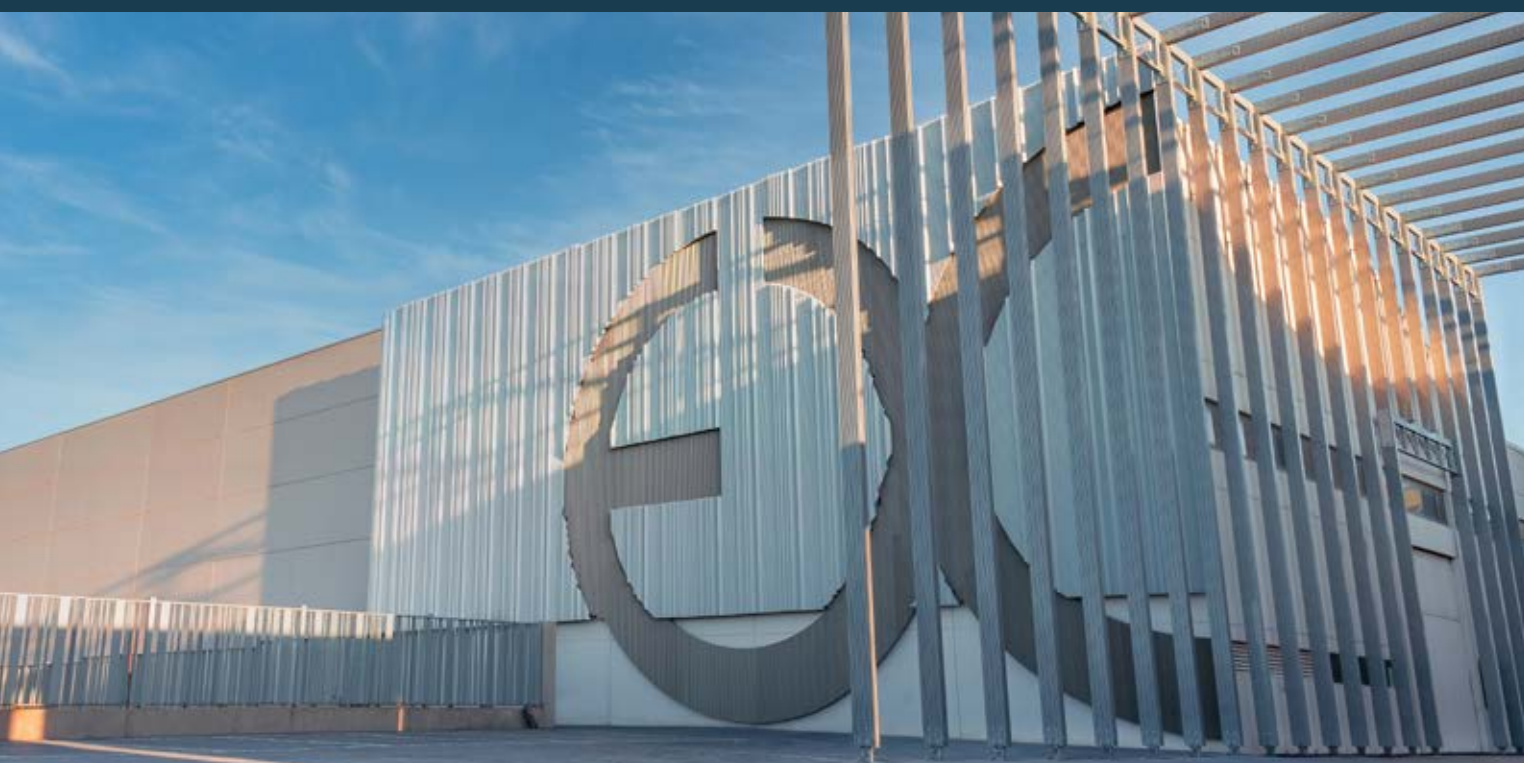


EXTRUAL
extruidos del aluminio ■ ■ ■



About Us	5	
History	6-7	
Production capacity	8-9	
Dies	10	
Extrusion	11	
Lacquering	12	
Sublimation	13	
Anodising	14	
Thermal bridge break	15	
Machining	16	
Packaging and shipping	17	
Alloys	18	
Sustainability	19	
Industry	21	
Carpentry Systems	22	
Industrial Profiles	23	
Sectors	24-27	
Architecture	29	
Carpentry Systems	30	
Standards and accessories	32	
Accessories	33	
Lacquering and sublimation	34	
Anodising	35	
Thermal bridge break	36	
Quality	37	
Service	38-39	

Table of contents

EXTRUAL,
mucho more
than an aluminium
factory

About Us

At EXTRUAL we have a single objective: to offer the highest quality with the best level of service.

To achieve this, all manufacturing processes are subjected to the most stringent quality controls, which requires modern industrial facilities and the highest level of automation in all processes.

Thanks to our extensive experience in the extrusion market, we have succeeded in attaining one of the widest ranges of aluminium profiles on the market, with solutions for both industry and building.

To this is added the confidence provided by experience and a solid commitment to innovation, to offer "customised" aluminium profiles solutions for our clients.

EXTRUAL, much more than an aluminium factory.

EXTRUAL
extrudados del aluminio

EXTRUAL
extrudados del aluminio



Dear friends

Gardel would say that 20 years is a mere trifle in the scheme of things and yet 40 years seems too few to me. When Extrual was founded in July 1981 with 12 people, 3,000 m2 facilities and a 1,000t press which could barely be operated with 6 inch blanks, I never dreamed that today we would be recognised as one of the leading companies in the sector with more than 60.000 m2, a workforce of over 300 employees and 6 extrusion presses from 1,800t to the latest 5,000t press, anodising, lacquering, thermal break system and sublimation plants, machining services, welding, international logistics and a multidisciplinary team that provides solutions in the various industrial sectors as well as in architecture.

This incredible evolution has only been possible thanks to the effort, hard work and enormous desire to learn of the Extrual family, and furthermore, the trust that our Clients have placed in us for decades, generating an image of quality and service which has led to our growth with new partners and clients year after year, the result of good work. It is for all these reasons, that if you are a client, I thank you for the journey and for continuing to trust us, and if you are not yet a client, we open the doors to show why Extrual makes the difference.

We are especially proud of our adaptation to the times policy, of continuous reinvestment

with the conviction that this is the only formula for success, not only professionally but also personally. This new website likewise responds to this need. We wish to show you what Extrual is and what we can do for you. For any project, you have your aluminium factory and your partner in design and engineering here.

Francisco Sanjosé Bartual
EXTRUAL Founder"

Our History step by step

1981 Foundation of Extrual. Commencement of industrial production with 12 people, 3.000m2 and 1 1,000t press. Becoming one of the doyens of the sector in Spain

1987 Installation of new 2,200t press which enabled increasing production and sector diversification

1992 Third press, this time a 1,800t press, for further growth.

1993-1996 Installation of a fourth press, this time a 2,800t press. Likewise inaugurating the thermal bridge break assembly line and the lacquering plant, which positioned us at the forefront of architecture systems.

2000 Continuing to make headway in providing added value with most modern finishes available, implementing a sublimation line and new anodising plant

2002 Reinvestment of profits to increase production and sectorial possibilities with a new 2,200t press.

2003 Competition stiffens and we respond to the market with technology: taking a qualitative leap by automating internal logistics and the installation of the Smart Warehouse

2018 The road to conquering the industrial sector is crucial, investing over 20M in the sixth 5,500t press, being pioneers in this capacity.

2020 -2021 Diversification into rail and transport sector clients requiring profiles up to 500 mm, and our sights set on the future of clean energy, recycled aluminum, and other industrial sectors of the future.

2024 - Future New sectors, markets and capacity investments await us, as 40 years is a mere trifle in the scheme of things

EXTRUAL
extruidos del aluminio



Production capacity

Our facilities have the highest level of automation in all processes, which enable having one of the most comprehensive ranges on the market with lengths, widths and finishes that few companies in the sector can offer.

Press	Power	Diameter	Tn/ year
Press 1	1.600	7"	4.000
Press 2	1.800	7"	4.300
Press 3	2.200	8"	6.000
Press 4	2.800	9"	9.200
Press 5	2.200	8"	7.500
Press 6	5.000	12"	15.000

5,000t press capable of 510mm diameters

Accessing these markets is not an easy feat, as extra power is required. That is why we invested in a 5,000t press, capable of circumscribed diameters up to 510 mm. with a weight per linear metre of up to 35 kg and lengths of up to 21 m. Few have this power, and Extrual has once again been a pioneer in this regard.

	Maximum	Minimum
Size	510 mm	10 mm
Weight per linear metre	35 kg.	90 gr.
	Máxima en maduración de perfiles	Máxima para lacado y anodizado
Length	21 m.	7 m.



At EXTRUAL we have two production centres:

- Parque Empresarial Campollano (Campollano Industrial Estate) Calle A nº 42 02007 Albacete.
- Avd. Guadalajara (P.I.Camporroso) 2, 02520, Chinchilla de Monte-Aragón, Albacete.



Smart Warehouse

Having furthermore, an automated and smart warehouse for dies, which enables having an optimum internal logistics, whilst helping to keep all clients' dies in perfect condition and state of repair.

Vertical lacquering plant

EXTRUAL has a vertical thermo-lacquering plant with double cabin, with a capacity of 5,000,000m2/year (equivalent to 700 football fields).

Anodising plant

Having an advanced and modern anodising plant, with 45,000 and 80,000 amps, fully automated.

Sublimation Plant

All our processes are accredited under the QUALIDECO trademark.

Thermal bridge break system plant

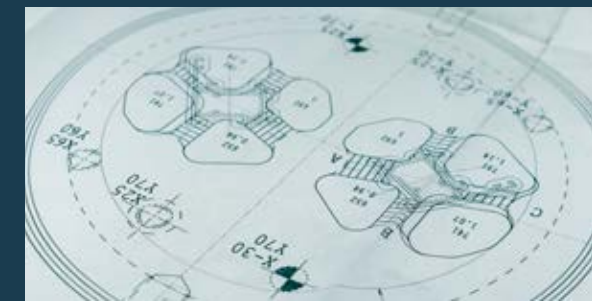
Within its facilities, Extrual has an assembly plant for thermal bridge break profiles, intended for a carpentry especially suitable for extreme climates.

Dies

Die correction, prior to the extrusion process, has in EXTRUAL all the elements to ensure an excellent surface finish of the profile.

- The consolidated trajectory of our specialised professionals.
- The appropriate tools.
- An effective cleaning method.

Having furthermore, an automated and smart warehouse for dies, which enables having an optimum internal logistics, whilst helping to keep all clients' dies in perfect condition and state of repair.



Extrusion

At Extrual all profiles are manufactured in modern extrusion presses, with a high level of automation throughout the movement of materials, which prevents manipulation and enables obtaining a product in perfect condition.

But undoubtedly, our greatest value is the experience of our extrusion professionals, who have been part of our personnel since 1981.

The alloys used to manufacture the profiles are adapted to meet the clients' requirements and the intended functionality of the finished product. Likewise, the heat treatments applied vary according to the mechanical characteristics to be obtained

Standards used:
Size and shape tolerances standard:

- UNE-EN 755-9
- UNE-EN 12020-2, specific for carpentry profiles



Alloy	Application	Heat treatment
6060	Architecture	T4, T5 y T6
6063	Architecture	T4, T5 y T6
6463	Decoration (high gloss)	T4, T5 y T6
6106	Semi-structural	T6
6005	Semi-structural	T6
6082	Structural	T6

Capacity of our presses

Single press	1600
Single press	1800
Two press	2200
Single press	2800
Single press	5000



Lacquering

We are a pioneer company in vertical plant aluminium lacquering processes, whereby possessing extensive experience and all the quality guarantees provided by the QUALICOAT trademark.

The lacquering commences with an aggressive chemical pretreatment in a non-chromic plant, where all the paints used do not contain TGIC, contributing to a lower environmental impact and in anticipation of the implementation of regulations in this regard.

The lacquering process confers the aluminium with high resistance properties against corrosion, in addition to offering an unlimited diversity of colours, in order to meet the aesthetic requirements of any sector: gloss, matte, textured, rugged, metallic etc.

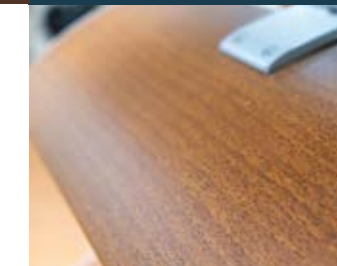


This finish is an alternative to wood carpentry, with all the environmental advantages that aluminum manufacturing processes entail.

This decoration is made using a polyester paint base without TGIC or polyurethane and a film (recyclable plastic), allowing for a wide range of finishes and a higher quality compared to the paper used in the past.



Sublimation



All our processes are accredited under the QUALIDECO trademark. In line with new trends, we continuously update our catalogue, which has a comprehensive variety of finishes: walnut, cherry, pine, teak, oak, root, chestnut, sapelly, acacia, rugged etc



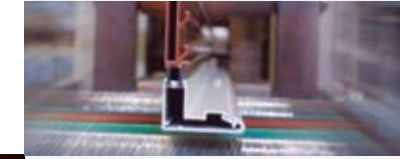


Anodising

EXTRUAL has 2 advanced and modern anodising plants, with 45,000 and 80,000 amps, fully automated.

This type of finish, which caps off the service offered to our clients, includes alkaline and acid treatments, as well as traditional and interference colouring. These processes, accredited under the QUALANOD trademark, make it possible to obtain an extremely strong product which is highly resistant to environmental corrosive agents, abrasion and wear.

There are currently several types of finishes available, all of these in various hues and mechanical treatments (brushing, sanding, polishing etc.).



Thermal bridge system

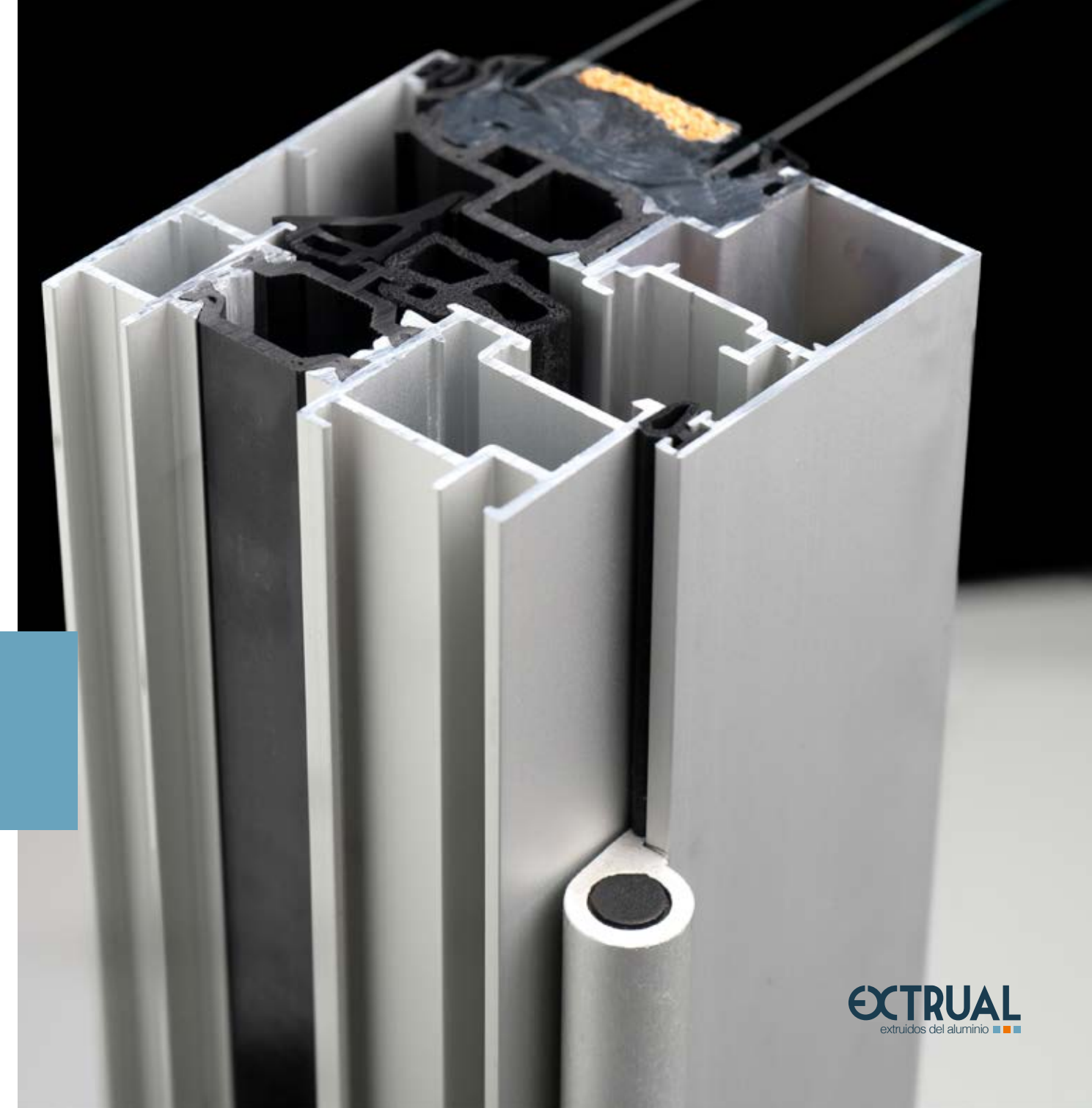
Within its facilities, Extrual has a thermal bridge break profiles assembly plant, intended for a carpentry especially suitable for extreme climates.

This system ensures excellent thermal and acoustic insulation, in addition to preventing interior condensation in humid and air-conditioned environments.

The thermal bridge break system is carried out by incorporating reinforced polyamide profiles, with 25% fiberglass between the aluminium profiles. For the assembly of all the parts there is available machinery which ensures obtaining a compact profile, with a minimum 30 N/mm shear resistance.

In our entire break line, Clients have the option of obtaining a bicolour profile or a profile with various finishes.

Ensures obtaining a compact profile, with a minimum shear resistance.

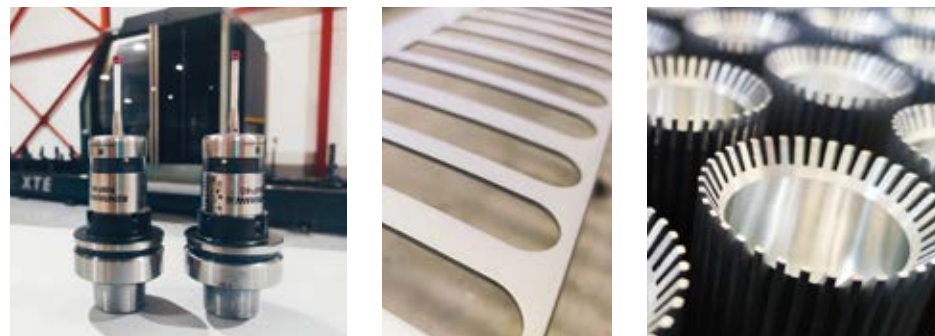


Machining

As part of the added value offered to its clients, one of the group companies, MECANIZADOS PROMEI, is specifically dedicated to profile machining. This enables the company to provide the client with a fully finished product.

As part of the main basic services, the following options are available:

- All types of machining: milling, drilling, grinding, tapping and turning.
- Precision cutting, both straight as well as bevelled. Troquelado simple y múltiple
- Vibration
- Bending
- Shearing



Packaging and shipping

To serve you in the best conditions. That is our main objective.

To this end, our sales and customer service departments will handle all your business enquiries, as well as following up orders, from their entry into presses, dispatch, transport and delivery.

As regards logistics, we have a fleet of 25 trucks, with which we efficiently cover national and international routes.

We invite you to learn more about us and to work with a company consolidated in quality and service. All things considered, a reliable company



Sustainability

Alloys



We use sustainable photovoltaic energy to reduce our environmental impact

Our range of profiles uses primary aluminium in 6063 alloy and T5 heat treatment, as per the EN 515, EN 573-3 and EN 755-2 Standards and under ISO 9001 certification. The dimensional and thickness tolerances comply with the UNE-EN 12020-2 Standard to offer you the best guarantees.

- EN AW-6060 and EN AW-6063: general use.
- EN AW-6463: for applications with subsequent high gloss anodising.
- EN AW-6005A: for applications where higher mechanical characteristics are required.
- EN AW-6106: for alloys where higher mechanical characteristics and better surface quality are required for post anodizing applications.
- EN AW-6082: for structural applications.



EXTRUAL formulates a responsible environmental policy, which applies to all areas of the company and results in environmentally friendly solutions.

Having obtained the Integrated Environmental Authorisation, which guarantees the carrying out of periodic inspections for the verification of emissions into the atmosphere, soil, noise and discharges into the network controls.

Thanks to the recyclability characteristics of aluminium, all surplus material at the various manufacturing process stages is sorted and classified. It is subsequently transferred to the aluminium billet production centres, where it is subjected to the appropriate treatment for reuse.

The company's awareness of environmental policies has led to the adoption of an exhaustive treatment of wastewater from the lacquering and anodising plants. This process is guaranteed through an advanced treatment system, enabling the recovery of up to 50% of the water for reuse.

EXTRUAL treats all its waste through authorised waste managers



Industry

The experience of our team is a differentiating value in the provision of truly innovative and customised solutions. Our extensive experience in numerous national and international projects in various sectors constitutes the basis of the department's technical knowledge to advise the client throughout the entire production process for their customised designs.



Innovative
solutions in
engineering and
industrial design



Design & engineering



We adapt to the clients' requirement until obtaining a "customised" product of the highest quality. To that end:

- a. A feasibility study of the product is carried out in terms of extrusion, mouths according to the geometry to optimise production, tolerances, alloy and heat treatment.
- b. All dies are first developed on a blueprint and then converted into 3D to verify their perfect functionality.
- c. Pre-production samples are made and sent to the client in a "double check" system.

"Confidentiality is our main linchpin, maximum secrecy in profiles and dies"



Industrial profiles



Having at EXTRUAL extensive knowledge of profiles for industrial field applications: furniture, lighting, household appliances, solar energy, transport, signage, electronics etc., in over 134 sectors.

In each development, our R&D department supports clients in meeting their objectives, both in terms of innovation as well as extrudability. Furthermore, offering the option of obtaining a "customised" product with the highest possible finish (lacquered, anodised, wood effect), including a machining section.

Confidentiality is our main linchpin, imbuing our clients' products the same value as if they were our own,



Sectors

Experience in various strategic industrial sectors creating solutions according to the requirements with a particular approach to each sector.

Having extensive technical knowledge in Large Structures profiles, floating structures and domes, pergolas and solar protection, façades, bodywork, solar panels, marquees, hangars, household appliances, signage and up to 134 other sectors with major national and international clients

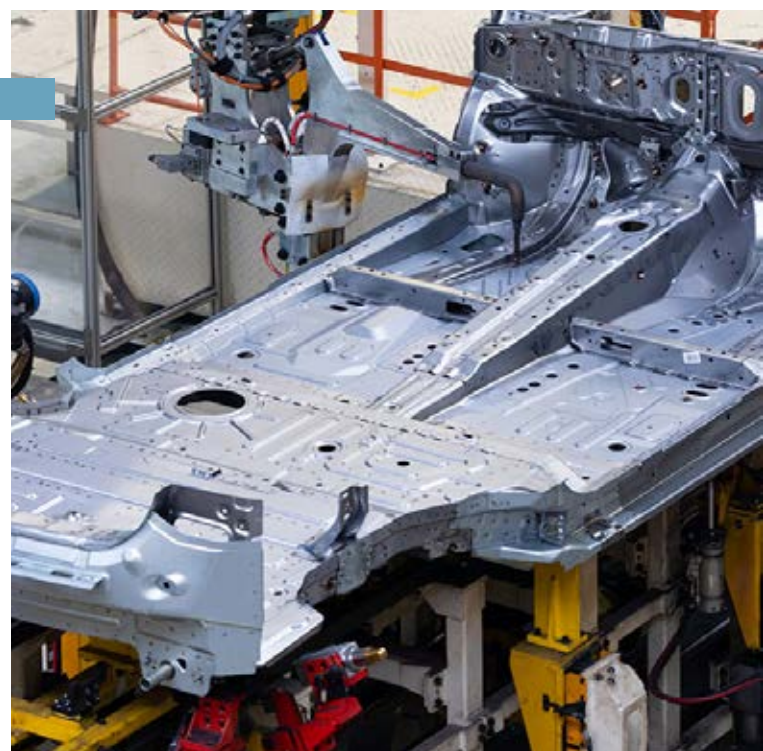


+134
SECTORES

Automotive

Aluminium is a key element of the present and future in any car. It combines a high energy absorption capacity in impacts with a significant weight reduction which lowers fuel consumption and reduces inertias. And now more than ever, with electric motors, aluminium is a strategic material for the sector.

- Seat rails
- Engine parts
- Decorative elements
- Structural elements
- Safety elements
- Roof racks



Transport

Whether for structural elements, bodywork, footboards, roofs, deflector plates, fuselages, hoods or air systems, among many other applications, aluminium is perfect due to its corrosion resistance, lightness, mechanical strength and the infinite number of colours in which it can be manufactured.

- Trains
- Trailers
- Trucks
- Boats
- Airplanes
- Buses



Infrastructures

Any product intended to withstand long-term outdoor use without losing aesthetic quality should be made of aluminium. Its low expansion, high durability, resilience and hardness make it perfect for numerous exterior elements.

- Large structures
- Roofs, marquees and domes
- Street furniture
- Distribution and logistics systems
- Safety elements
- Building (enclosures, pergolas, awnings etc.)
- Auxiliary construction elements



Signage

Aluminium has a wide range of finishes which imbue a product with excellent aesthetic functionalities. This, together with a very high durability and resistance to climatic changes and corrosion, make it essential for products which are required to withstand outdoors for a long periods of time while retaining their visibility.

- Panels
- Traffic lights
- Street lighting
- Traffic signs
- Signage enclosures and information points



Sectors

Electronics and household appliances

From minimal parts to large profiles for any type of electronic component or household appliance, such as hot air dissipators, machinery components or refrigerator doors. With maximum lightweightness, durability, resilience, functionality, mechanical properties and design.

- Heat sink
- Grills
- Refrigerator doors
- Channellers
- Casings
- Functional elements
- Decorative elements

Furniture and decoration

From kitchen elements to entire pieces of furniture, including LED lighting, structures for sofas or beds, accessories or decorative products. Aluminium with its infinite finishes offers numerous solutions for any type of product combining quality, beauty and durability.

- Furniture
- Decorative elements
- LED lighting
- Display cabinets
- Knobs
- Frames



Renewable Energy

Aluminium is particularly important in this sector due to its greater efficiency compared to other elements, thanks to its good conductivity and low weight. Furthermore, Extrual is the first extruder partner of the UNEF (Spanish Photovoltaic Union), which gives us a special knowledge of the sector requirements, which we consider strategic.

- Solar collectors
- Photovoltaic structures
- Platforms
- Heat dissipation
- Generators
- System components



Architecture

Partnership

Every time a project is started you face new ground, full of hopes, but likewise the unknown. EXTRUAL has been that quality party to lean on for years, an ally that shares your endeavours and celebrates your successes.

Innovation

It is well known that contemporary architecture requires commitment from manufacturers, collaboration and quality assurance. That is why EXTRUAL makes available "EXTRUAL Systems", one of the widest ranges of aluminium profiles on the market, the result of the constant commitment to innovation in all its processes. Our R&D+i department will be happy to guide you, bringing the experience of our brand to your creativity in strict confidentiality.

Sustainability

We believe, like you, that sustainability must not be an empty word which is used blithely, but that all the products in our range are due to their origin: aluminium, a noble, natural, recyclable and durable element.

We would like to personally thank you for the trust placed in EXTRUAL, a brand where you will feel supported by hundreds of professionals ready to help you make your dreams come true.



Your project,
our pride

Carpentry systems



Hinged

Most used system with greater insulation. Opening on a vertical axis with several options.



Curtain wall

Modular façade system allowing for protection, opening and accessibility according to needs. It is a self-supporting external envelope anchored to the structure of the building.

Lattice shutters

Façade system which confers design and decoration while regulating light and airflow.



Sliding doors

An opening leaves sliding on tracks system, optimising the space around the window.



Handrails

Walkable surface barrier system which prevent falls, such as on stairs or terraces, combining design and safety.

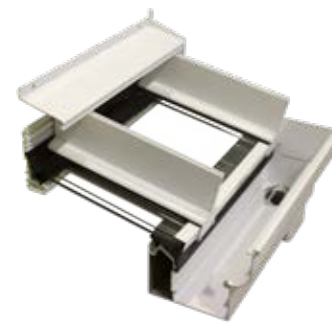


Majorcan shutters

Slat screen system which protects the room against direct sunlight and reduces heat, allowing fresh air to pass through and continuous ventilation.

Fixed Roof

System to close off all types of spaces such as terraces, porches or verandas, providing luminosity and enabling one to enjoy the views.



Gate

Aesthetic manual or motorised security system which prevents access to the garden, front of the home or other spaces.



At EXTRUAL we have developed and consolidated a comprehensive range of our own carpentry series, which are marketed under the EXTRUAL SISTEMAS brand.

Continuous innovation and the provision of an appropriate solution to the clients' requirements have shaped the research in this area, where architectural solutions are available for any requirement.

Standards and accessories

Standard profiles

Together with the customised products for clients, we have developed a comprehensive catalogue of standard profiles, both applicable to the carpentry and other industry (furniture, lighting, transport, solar energy etc.) sectors.

- ROUND TUBULAR From Ø 9.3 mm. to Ø 101.6 mm
- SQUARE From 16x16 mm. to 120x120 mm
- RECTANGULAR From 18x13 mm. to 150x50 mm
- ANGLE From 15x15 mm. to 90x90 mm
- "T" SHAPE PROFILE From 25x25 mm to 60x60 mm
- "L" SHAPE PROFILE From 15x10 mm. to 150x50 mm
- "U" SHAPE PROFILE From 8.3x21 mm to 45x115 mm
- SOLID ROUND From Ø 10mm. to Ø 60 mm

Carpentry accessories

EXTRUAL has a wide range of complementary profiles for numerous carpentry solutions, such as: insect screens, flashings, overlaps, lining, flat awnings, cladding, louvers, subframes etc. Furthermore, all accessories marketed are tailored to the systems developed by EXTRUAL and comply with the current regulations governing each accessory.

- CORNER BRACKETS
- TBB CORNER BRACKETS
- CORNER BRACKETS FOR COMPACTS
- COMPACT GUIDES From 22 mm. to 150 mm
- TBB COMPACT GUIDES From 100 mm to 150 mm
- FLASHINGS From 180 mm to 260 mm

Accessories



It is clear to us at EXTRUAL usability should not be at odds with architectural beauty.



All accessories marketed are tailored to the systems developed by Extrual and comply with the current regulations governing each accessory.

Our series are tested using the recommended accessories and therefore we cannot guarantee the performance and operation with different accessories.



Lacquering and sublimation

With EXTRUAL you will have the reassurance of working with a wide selection of powder coatings for exterior applications, the result of the close collaboration with the best manufacturers, such as Axalta Coating Systems. Offering products with paints with high mechanical properties, highly resistant to weathering, committed to a continuous study of new product designs and systems, such as Alesta® Cool, capable of maintaining the same temperature of light coatings in dark finishes. Discover our range of paints.

- For its gloss - Gloss, Satin and Matte
- For its texture - Smooth, Textured and Smooth Textured
- Special colours metallic, graphite, oxides, flecked, spatula, sables, quartz, manganese, copper, bronze etc.
- Wood effect finish sublimation - Smooth or textured, Class I or Class II, being ember, walnut and cherry the most in demand, better surface quality for applications with subsequent anodising.

Guarantees

QUALICOAT Certification Class I for exteriors.

QUALICOAT Certification Class II for exteriors with greater durability (SUPER DURABLE).

QUALICOAT – SEASIDE (Lic. 425) Certification of our plants.

With sublimation, as in carpentry, an alternative to wood with the environmental advantage of aluminium is obtained. And not just wood; thanks to this process aluminium surfaces and visual effects indistinguishable from almost any material such as wood, marble or drawings as required can be manufactured. It is truly an aesthetic advantage for any type of project.

The combination and possibilities offered by lacquering and sublimation as regards aluminium offer a true range of finishing options that cover any effect which can be imagined, and can similarly provide roughness to the surface. Imagination is the only limit.



Anodising



Anodising your profiles will enable obtaining an extremely strong product and resistant to environmental corrosive agents, abrasion and wear.

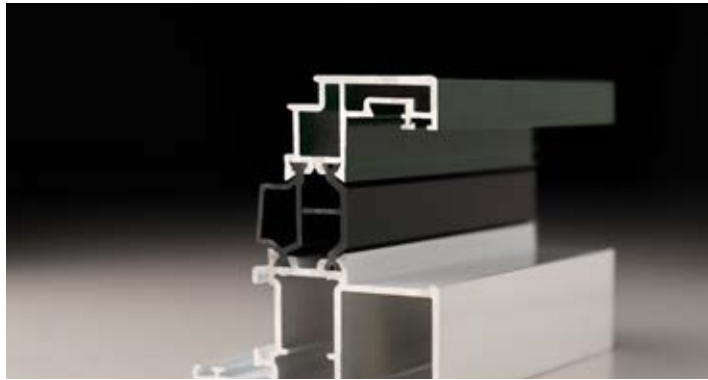
At Extrual we are committed to bringing technique and design together with our anodised finishes. Anodised silver, stainless steel, gold, titanium, bronze, burgundy, black and French satin.

Various hues and mechanical treatments (brushing, sanding, polishing etc.).

Guarantees

Following a philosophy based on quality and guarantees for our clients and their projects, our anodising plants are certified by the QUALANODOD quality seal.



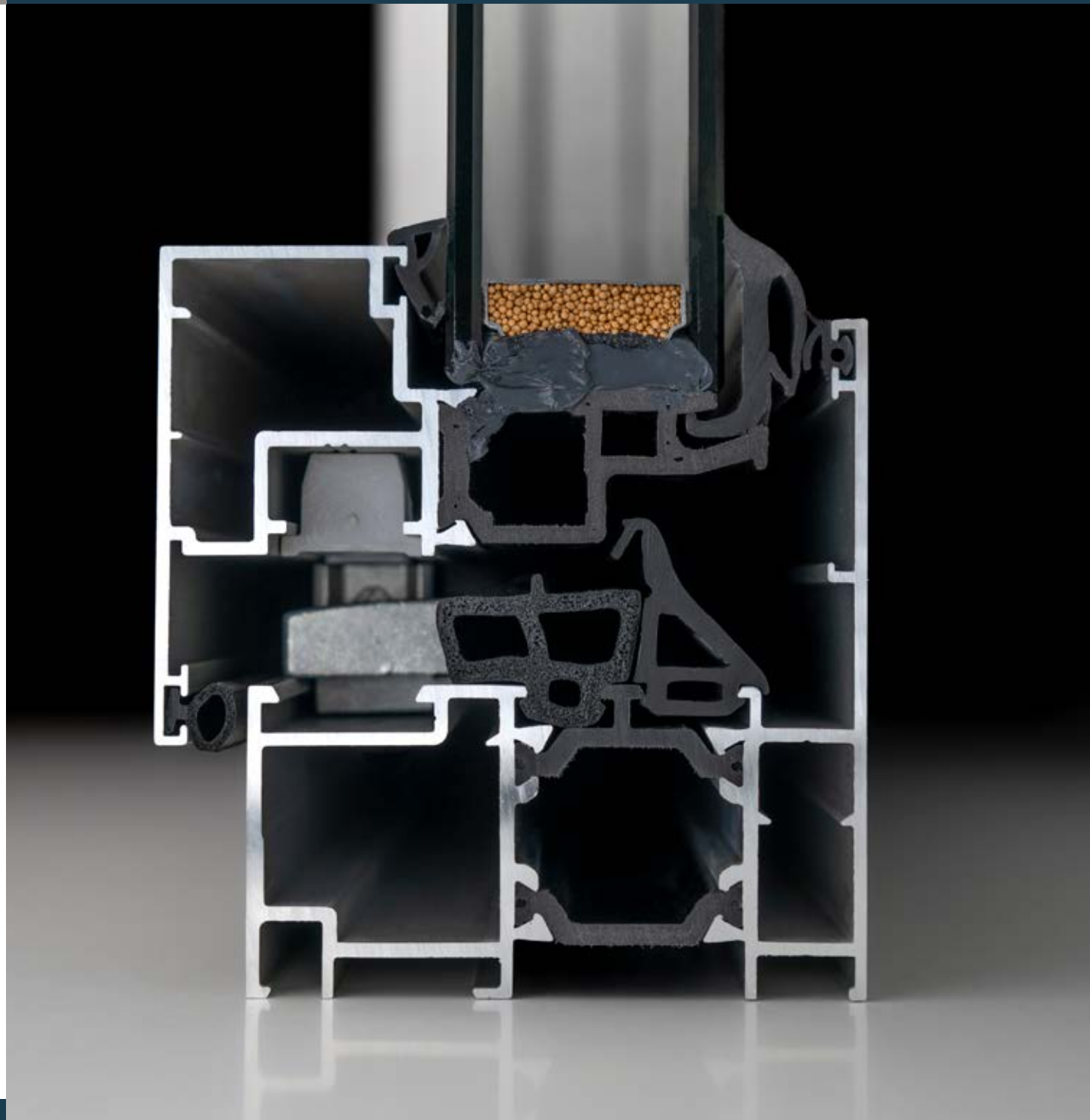


Thermal bridge break

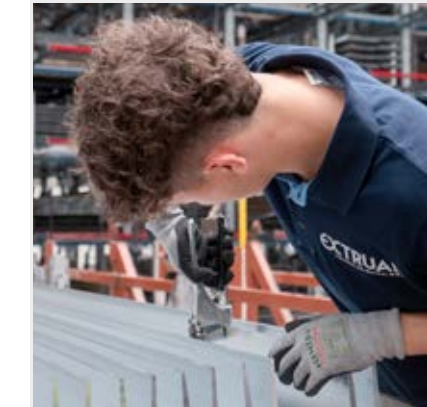
Nowadays there is an increased awareness of energy savings and this trend is embodied in the various regulations in each country. This has resulted in a continuous improvement of our systems to comply with the existing regulations in each market. Within this constant innovation process the thermal bridge break plays a fundamental role

EXTRUAL collaborates on a regular basis with the world leader in design and manufacturing such as Technoform in polyamide 6.6 with 25% fiberglass. The result of this collaboration is embodied in each of our systems.

A critical part of thermal bridge break systems is the assembly. Thanks to the design and development collaboration with our supplier Extrual's systems ensure compliance with the UNE-14024 Standard as well as the stringent French NF Standard.



- **QUALICOAT - SEASIDE Marine Grade.** For lacquering processes.
- **QUALIDECO** - For wood effect sublimation.
- **QUALANOD** - Certifies the quality of anodised aluminium.
- **QB49** - Certificate of thermal bridge break assembly for CSTB, French organisation.
- **EN-15088:2005 Standard** - Certificate of factory production control of profiles for structural applications.
- **CISO 9001 Certificate** - Quality Management System.
- **AI+C Certificate** - Certifies low CO2/Tn consumption in profile extrusion.



Quality



Aware of the importance of meeting client requirements and obtaining client satisfaction in terms of quality and service, EXTRUAL works under the objective of continuous improvement as the only effective mechanism to achieve this.

This has resulted in the attainment of several quality seals, which ensure a stringent control in all production processes and enable us to comply with market requirements.

Laboratories in each production plant with a highly qualified in-house team



Service



To serve you in the best conditions is our main objective.

Our Sales and Customer Service Department work hand in hand with the factory, quality and logistics, being a nexus between all your requirements and enquiries and the production process; from the configuration of the idea, its way through presses and finishing sections, packaging, and until the dispatch and delivery of the material.

To this end, our "Backoffice" figure acts as a conveyer belt between the office and the factory, attending daily production planning meetings, prioritising orders, handling emergencies and registering any type of incident which may occur; in the latter case, the client is always advised as regards a designed solution



Our logistics department has a large fleet of medium and high load trucks with which we efficiently cover all national and international routes. The client is advised as regards the delivery week upon order confirmation and is automatically advised once again in relation to the date and time of the arrival of the order.

Furthermore, for intercontinental services there is available an assistance and management with reliable suppliers services according to your location and shipping characteristics, including customs clearance

We invite you to learn more about us and to work with a company consolidated in quality and service. All things considered, a reliable company.



EXTRUAL
extruidos del aluminio ■ ■

extrual.com